

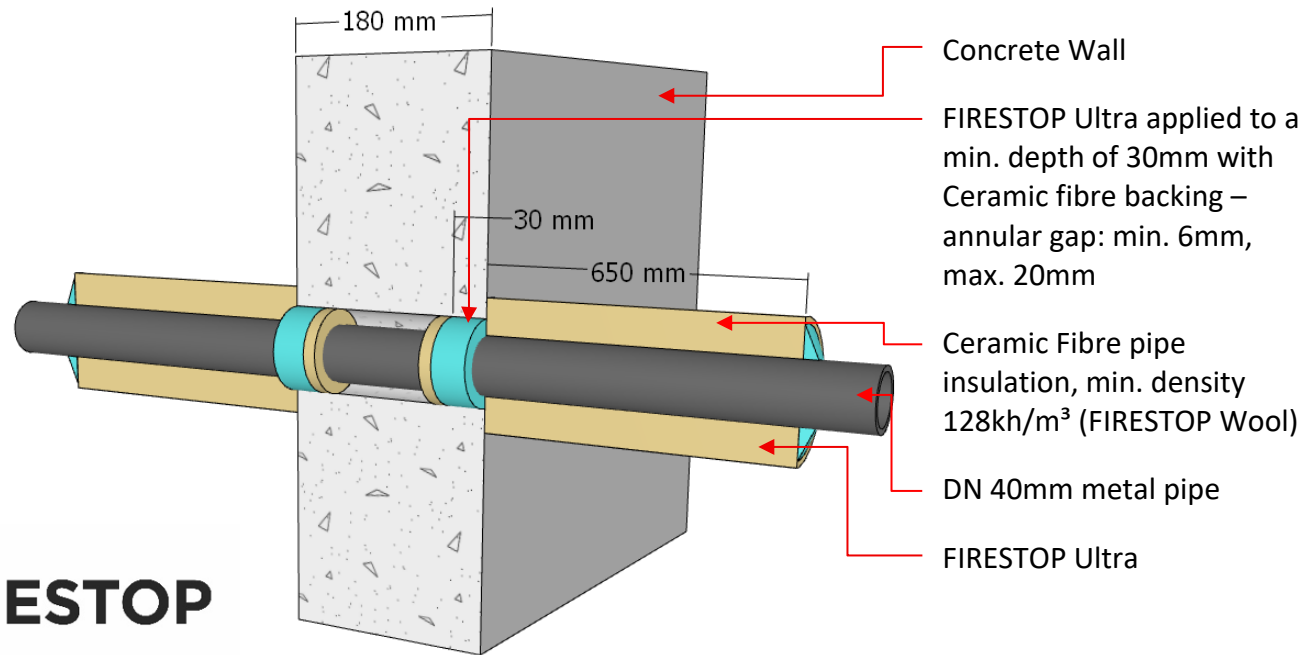


**Firestop  
Centre**  
Innovative Firestop Solutions

## System FC757

**Penetration Detail:** 40mm Steel  
Pipe fire-stopped with FIRESTOP  
Ultra Sealant

**Separating Element:** Min. 180mm thick  
Concrete Wall



### Installation Instructions:

1. Ensure surfaces are clean and free of grease or other contaminants.
2. Apply FIRESTOP Ultra around metal pipe (min. 30mm depth, flush with wall) backed with ceramic fibre.
3. Wrap pipe with min. 26mm thick ceramic fibre blanket (2 layers of 13mm blanket), 610mm from both wall faces; secure with steel cable ties.
4. Apply 25mm bead of FIRESTOP Ultra between wall and insulation.
5. Seal gap between end of ceramic fibre and pipe with FIRESTOP Ultra.

### Services & Ratings (FRR)

Steel Pipe Size	Aperture Size	Annular Gaps	FRR
DN 40mm	72mm	6-20mm	-/360/360

- **FIRESTOP Ultra** is suitable for both interior and exterior applications - refer to the *FIRESTOP Ultra UV-Adhesion Report* for details.

### Compliance

**Report** Fire TS Lab Report  
RIR210460 1  
**Pages** 4 & 15  
**Standards** AS1530.4-2014 &  
AS4072.1-2005

Firestop Centre Technical support:  
Tel: +64 9 483 4000  
[info@firestopcentre.co.nz](mailto:info@firestopcentre.co.nz)  
[www.firestopcentre.co.nz](http://www.firestopcentre.co.nz)

Drawing Rev: 1.0

Scale: NTS

**Disclaimer:** Firestop Centre may change product specifications without notice as part of our ongoing development and testing. All information in this document is provided in good faith and for guidance only. All drawings are for illustration purposes only and may not reflect the actual product. Since we cannot control how the product is installed or the conditions on-site, we do not guarantee the product's performance. We also accept no responsibility for any loss, damage, or injury resulting from the use of this information.